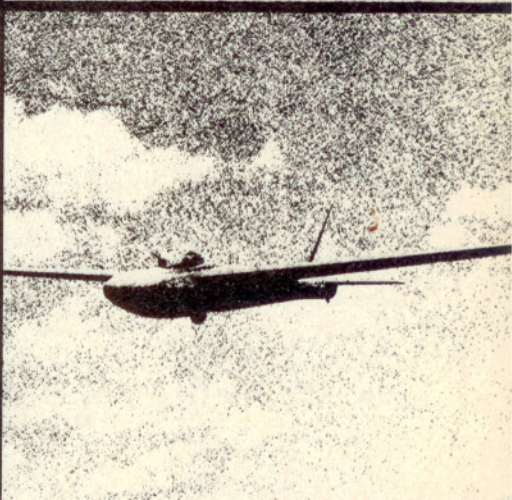
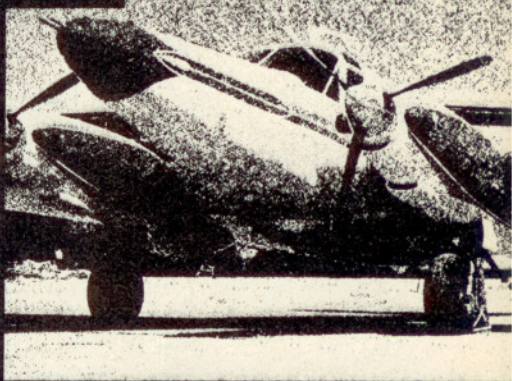
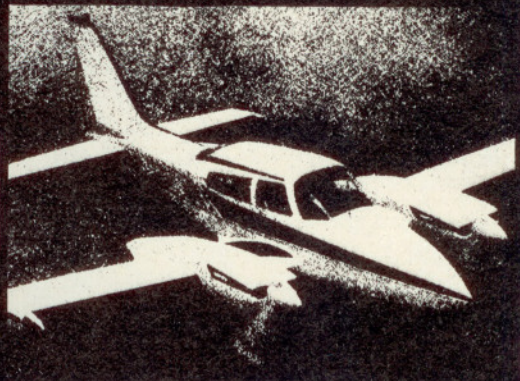
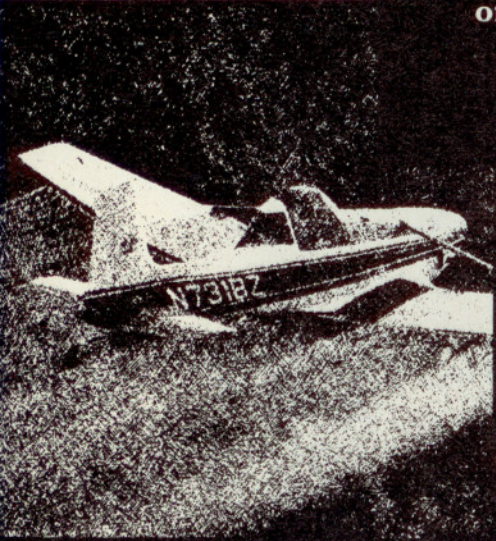


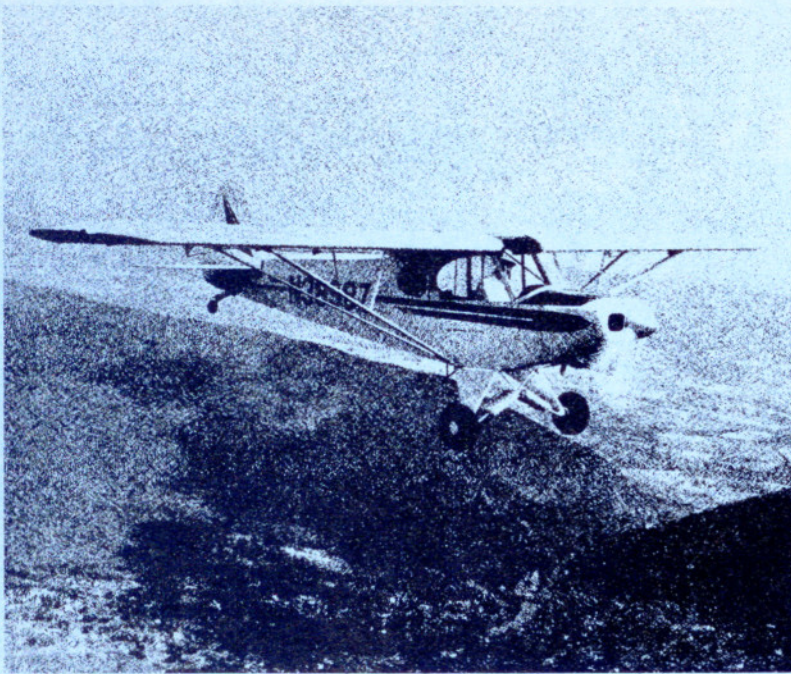
AOPA PILOT'S
**MARCH BONUS
SUPPLEMENT**
General Aviation
Aircraft 1977

- Single-Engine Fixed Gear
- Single-Engine Retractable Gear
- Multi-Engine (Piston)
- Turboprops
- Turbojets
- Short Takeoff and Landing (STOL)
- AG Planes
- Conversion Airplanes
- Rotary Wing
- Sailplanes
- Balloons

All aircraft listed are now available or are expected to be marketed and certificated in the United States during 1977.

Copyright © Aircraft Owners and Pilots Association 1977





Piston Single-Engine Fixed Gear

Model	Seats	Powerplant HP/Propeller (FP or CS)*	Fuel Capacity (gal.) (Std./Opt.)	Weights Gross/Empty (lbs)	Cruise Speed		Optimum Range (nm) (With 45 min. reserve)		Takeoff/Landing Distance (ft) (Over 50' Obstacle)	Rate of Climb** (fpm)	Service Ceiling (ft)	Stall Speed gear/flaps down (knots)	Length/ Height/Span	Wing Area (sq. ft)	Price (Basic)
					75% (knots)	65% (knots)	75% (Std./Opt.)	65% (Std./Opt.)							
ARCTIC AIRCRAFT CO.															
Interstate S1B2	2	Lyc. O-320 150 hp/FP	40	1900/1073	102/96	479	566	500/450	1275	19,000	34	24' 7"/36'	186	\$22,500	
BEECH AIRCRAFT CORP.															
Sport 150	2-4	Lyc. O-320-E3D 150 hp/FP	57	2150/1414	109/98	622	649	1635/1693	680	11,650	50	25' 9"/ 8' 3"/32' 9"	146	\$23,550	
Sundowner 180	4	Lyc. O-360-A4K 180 hp/FP	57	2450/1477	119/108	533	582	1955/1484	792	12,600	51	25' 9"/ 8' 3"/32' 9"	146	\$28,300	
BELLANCA AIRCRAFT CORP.															
Citabria Std. 7ECA (A)	2	Lyc. O-235-C1 115 hp/FP	35	1650/1067	107/105	388	555	895/775	725	12,000	44	22' 8"/ 7' 8"/33' 5"	165	\$16,300	
Citabria "A" 7GCAA (A)	2	Lyc. O-320-A2D 150 hp/FP	35	1650/1120	112/111	356	442	663/755	1120	17,000	44	22' 8"/ 7' 8"/35' 5"	165	\$18,850	
Citabria "C" 7GCBC (A)	2	Lyc. O-320-A2D 150 hp/FP	35	1650/1150	111/110	352	457	567/690	1145	17,000	39	22' 8"/ 7' 8"/34' 5"	170	\$19,865	
Citabria "B" 7KCAB (A)	2	Lyc. AE10-320- E2B 150 hp/FP	35	1650/1140	112/111	356	442	663/775	1120	17,000	44	22' 8"/ 7' 8"/35' 5"	165	\$20,750	
Scout 8GCBC	2	Lyc. O-360-C2E 180 hp/FP	35/70	2150/1315	106/105	258/595	285/649	1055/1245	1080	14,500	45	22' 10"/ 8' 8"/36' 2"	180	\$23,890	
Decathlon 8KCAB (A)	2	Lyc. AE10-320- E1B 150 hp/CS	40	1800/1280	119/113	464	502	1285/1450	880	16,000	46	22' 11"/ 7' 8"/32'	169	\$23,995	
CESSNA AIRCRAFT CO.															
150 Standard	2	Cont. O-200-A 100 hp/FP	22.5/35	1600/1035	106/100	342/575	368/625	1385/1075	670	14,000	42	23' 11"/ 8' 6"/32' 8"	157	\$13,950	
150 Commuter	2	Cont. O-200-A 100 hp/FP	22.5/35	1600/1111	106/100	342/575	368/625	1385/1075	670	14,000	42	23' 11"/ 8' 6"/33' 1"	160	\$17,650	
150 Aerobat	2	Cont. O-200-A 100 hp/FP	22.5/35	1600/1093	105/99	336/570	364/618	1385/1075	670	14,000	42	23' 11"/ 8' 6"/32' 8"	157	\$18,400	
172 Skyhawk/100	4	Lyc. O-320-H2AD 160 hp/FP	40/50	2300/1379	122/115	487/630	527/683	1440/1250	770	14,200	44	26' 11"/ 8' 10"/35' 10"	174	\$22,300	
172 Hawk XP	4	Cont. IO-360-K 195 hp/CS	49	2550/1549	130/119	478	530	1360/1270	870	17,000	46	27' 2"/ 8' 10"/35' 11"	174	\$29,950	
177 Cardinal	4	Lyc. O-360-A1F6D 180 hp/CS	49/60	2500/1533	130/121	533/677	576/730	1400/1220	840	14,600	46	27' 3"/ 8' 7"/35' 6"	174	\$32,600	

(A)—Aerobatic

* Fixed Pitch or Constant Speed

** Gross Weight, Sea Level

Model	Seats	Powerplant HP/Propeller (FP or CS)*	Fuel Capacity (gal.) (Std./Opt.)	Weights Gross/Empty (lbs)	Cruise Speed		Optimum Range (nm)		Takeoff/Landing Distance (ft) (Over 50' Obstacle)	Rate of Climb** (fpm)	Service Ceiling (ft)	Stall Speed gear/flaps down (knots)	Length/ Height/Span	Wing Area (sq. ft)	Price (Basic)
					75%	65%	75%	65%							
180 Skywagon	4-6	Cont. O-470-U 230 hp/CS	56/75	2800/1648	142/133	515/723	560/786	1205/1365	1100	17,700	48	25' 9"/ 7' 9"/35' 11"	174	\$32,950	
182 Skylane	4	Cont. O-470-U 230 hp/CS	56/75	2950/1717	144/135	520/733	566/797	1350/1350	1010	16,500	50	28' 1"/ 9' 2"/35' 11"	174	\$34,950	
185 Skywagon	1-6	Cont. IO-520-D 300 hp/CS	55/74	3350/1687	145/137	410/587	443/633	1365/1400	1010	17,150	49	25' 9"/ 7' 9"/35' 11"	174	\$38,650	
206 Stationair	1-6	Cont. IO-520-F 300 hp/CS	59/76	3600/1910	147/138	450/610	485/657	1780/1395	920	14,800	54	28'/ 9' 11"/35' 11"	174	\$45,350	
207 Skywagon	7	Cont. IO-520-F 300 hp/CS	54/73	3800/1996	143/134	390/563	419/607	1970/1500	810	13,300	58	31' 10"/ 9' 6"/35' 11"	174	\$48,650	
T-206 Stationair	6	Cont. TSI0-520-M 310 hp/CS	59/76	3600/1990	162/150	416/585	435/615	1640/1395	1010	27,000	54	28' 2"/ 9' 11"/35' 11"	174	\$51,300	
T-207 Skywagon	7	Cont. TSI0-520-M 310 hp/CS	54/73	3800/2071	157/145	343/523	360/552	1860/1500	885	26,000	58	31' 10"/ 9' 6"/35' 11"	174	\$54,800	

FALCON AIRCRAFT CORP.

F-1	2	Lyc. O-320-A2B 150 hp/FP	28.2	1900/1290	92/83	231	249	800/800	597	11,000	no flaps 33	23' 1"/8' 3"/ 27' 2" (Upper) 25' (Lower)	200	\$23,750
-----	---	-----------------------------	------	-----------	-------	-----	-----	---------	-----	--------	----------------	--	-----	----------

GREAT LAKES AIRCRAFT CO.

2T-1A-2	2	Lyc. IO-360-B1F6 180 hp/CS	26	1800/1230	100/90	250	NA	825/850	1400	17,000	48	20' 6"/ 8' 4"/26' 8"	187	\$35,000
---------	---	-------------------------------	----	-----------	--------	-----	----	---------	------	--------	----	-------------------------	-----	----------

GRUMMAN AMERICAN AVIATION CORP.

AA-1C	2	Lyc. O-235-L2C 115 hp/FP	24	1600/1002	112/106	293	304	1530/1125	750	11,900	52	19' 2"/ 7' 7"/24' 6"	101	\$14,375
AA-1C Lynx	2	Lyc. O-235-L2C 115 hp/FP	24	1600/1066	117/108	299	311	1590/1125	700	11,500	52	19' 2"/ 7' 7"/24' 6"	101	\$18,750
AA-5A Cheetah	4	Lyc. O-320-E2G 150 hp/FP	38/52.6	2200/1303	128/118	448/656	475/697	1600/1100	660	12,650	53	22'/ 8'/31' 6"	140	\$20,815
AA-5B Tiger	4	Lyc. O-360-A4K 180 hp/FP	52.6	2400/1311	139/130	554	573	1550/1120	850	13,800	53	22'/ 8'/31' 6"	140	\$26,590

PIPER AIRCRAFT CORP.

Super Cub	2	Lyc. O-320 150 hp/FP	36	1750/946	100/96	400	471	500/885	960	19,000	37	22' 6"/ 6' 8"/35' 4"	179	\$20,030
Warrior II	4	Lyc. O-320-D3G 160 hp/FP	50	2325/1341	121/112	566	599	1490/1115	710	13,000	50	23' 10"/ 7' 4"/35'	170	\$20,820
Archer II	4	Lyc. O-360-A4M 180 hp/FP	50	2550/1416	125/121	561	596	1625/1390	740	13,650	54	23' 10"/ 7' 4"/35'	170	\$25,610
Pathfinder	4	Lyc. O-540-B4B5 235 hp/CS	84	3000/1592	133/127	685	759	1260/1740	800	13,550	57	24' 1"/ 7' 6"/32' 2"	170	\$35,060
Cherokee Six 260	6-7	Lyc. O-540-E4B5 260 hp/CS	84	3400/1784	133/126	648	680	1800/1000	775	12,800	55	27' 8"/ 8' 2"/32' 10"	175	\$40,840
Cherokee Six 300	6-7	Lyc. IO-540-K1A5 300 hp/CS	84	3400/1856	145/142	636	693	1350/1000	1050	16,250	55	27' 8"/ 8' 2"/32' 10"	175	\$44,610

PITTS AVIATION ENTERPRISES, INC.

S-1S	1	Lyc. AE10-360- B4A 180 hp/FP	20	1150/750	126/117	200	NA	1050/970	2600	22,000	56	15' 6"/ 6' 3"/17' 5"	99	\$26,743
S-2A	2	Lyc. AE10-360- A1A 200 hp/CS	24	1515/1025	128/121	170	NA	1275/1230	1960	22,000	54	17' 9"/ 6' 5"/20'	125	\$31,843

PZL-WSK

Wilga-104	4	14RA Radial (Poland) 260 hp/CS	50	2711/1874	125/100	420	500	610/750	1200	15,000	37	26'/9'/36'	166	\$38,500
-----------	---	-----------------------------------	----	-----------	---------	-----	-----	---------	------	--------	----	------------	-----	----------

TAYLORCRAFT AVIATION CORP.

F19	2	Cont. O-200A 100 hp/FP	24	1500/900	103/97	348	391	335/213	775	18,000	37	22' 1"/ 6' 10"/36'	184	\$11,995
-----	---	---------------------------	----	----------	--------	-----	-----	---------	-----	--------	----	-----------------------	-----	----------

VARGA AVIATION CORP.

Kachina 2150A	2	Lyc. O-320-A2C 150 hp/FP	35	1817/1125	117/110	370	457	440/450	1450	22,000	45	21' 2"/ 7'/30'	144	\$17,750
---------------	---	-----------------------------	----	-----------	---------	-----	-----	---------	------	--------	----	-------------------	-----	----------

* Fixed Pitch or Constant Speed

** Gross Weight, Sea Level

NA Not available

Piston Single-Engine Retractable Gear



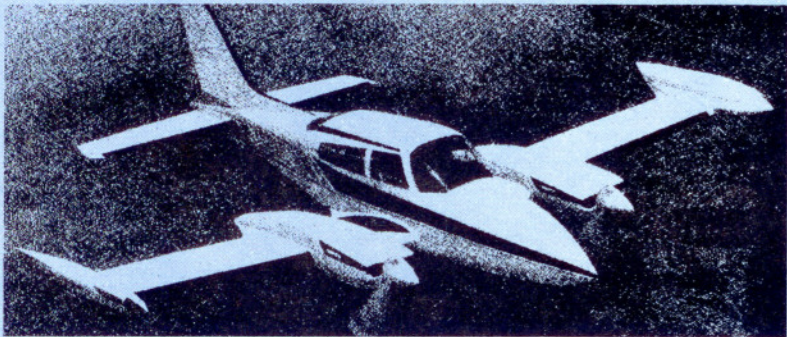
Model	Seats	Powerplant HP/Propeller (FP or CS)*	Fuel Capacity (gal.) (Std./Opt.)	Weights Gross/Empty (lbs)	Cruise Speed 75% 65% (knots)	Optimum Range (nm) (With 45 min. reserve) 75% 65% (Std./Opt.)	Takeoff/Landing Distance (ft) (Over 50' Obstacle)	Rate of Climb** (fpm)	Service Ceiling (ft)	Stall Speed gear/flaps down (knots)	Length/ Height/Span	Wing Area (sq. ft)	Price (Basic)
BEDE GENERAL CORP.													
BD-5D	1	Xenoh 2-Cycle 60 hp/FP	28	850/450	181/170	685 725	1500/1210	1690	18,800	60	13' 4" / 4' 2" / 17'	38	\$7,250
BEECH AIRCRAFT CORP.													
Sierra 200	4-6	Lyc. 10-360-A1B 200 hp/CS	57	2750/1693	137/127	646 670	1660/1462	927	16,400	60	25' 9" / 8' 1" / 32' 9"	146	\$39,000
Bonanza F33A	4-5	Cont. 10-520-BA 285 hp/CS	44/74	3400/2112	172/168	NA/716 NA/777	1769/1324	1167	17,858	51	26' 8" / 8' 3" / 33' 6"	181	\$65,950
Bonanza V35B	4-5	Cont. 10-520-BA 285 hp/CS	44/74	3400/2087	172/168	NA/716 NA/777	1769/1324	1167	17,858	51	26' 5" / 7' 7" / 33' 6"	181	\$65,950
Bonanza A36	4-6	Cont. 10-520-BA 285 hp/CS	44/74	3600/2157	168/163	NA/697 NA/748	2040/1450	1030	16,600	52	27' 6" / 8' 5" / 33' 6"	181	\$70,550
BELLANCA AIRCRAFT CORP.													
17-30A	4	Cont. 10-520-K 300 hp/CS	60/75	3325/2217	163/157	510/668 582/756	1420/1340	1085	17,000	61	26' 4" / 7' 4" / 34' 2"	162	\$51,995
17-31A	4	Lyc. 10-540-K1E5 300 hp/CS	60/75	3325/2236	165/161	500/655 559/729	1420/1340	1170	18,200	61	26' 4" / 7' 4" / 34' 2"	162	\$54,789
17-31 ATC	4	Lyc. 10-540-K1E5 300 hp/CS	60/75	3325/2372	193/175	587/771 624/812	1420/1340	1170	24,000	61	26' 4" / 7' 4" / 34' 2"	162	\$64,820
BELLANCA AIRCRAFT ENGINEERING, INC.													
19-25 Skyrocket II	6	Cont. GTS10- 520-F 435 hp/CS	150	4100/2300	262/250	1057 1275	1790/1665	1900	30,000	57	28' / 9' 3" / 35'	183	\$100,000
CESSNA AIRCRAFT CO.													
177 Cardinal RG	4	Lyc. 10-360-A1B6D 200 hp/CS	60	2800/1703	148/139	714 772	1585/1350	925	17,100	50	27' 3" / 8' 7" / 35' 6"	174	\$39,950
210 Centurion	6	Cont. 10-520-L 300 hp/CS	90	3800/2175	171/162	852 925	2030/1500	860	15,500	56	28' 2" / 9' 6" / 36' 10"	175	\$59,950
T-210 Centurion	6	Cont. TS10-520-R 310 hp/CS	90	3800/2251	193/179	852 906	1900/1500	1030	28,500	56	28' 2" / 9' 6" / 36' 10"	175	\$65,950
LAKE AIRCRAFT													
Buccaneer-LA 4-200 (Amphibian)	4	Lyc. 10-360-A1B 200 hp/CS	40/55	2690/1535	125/115	424/617 436/632	1450/900 (Water) 775/900 (Land)	1200	14,700	45/39	25' / 9' 4" / 38'	170	\$40,950
MOONEY AIRCRAFT CORP.													
Ranger M20C	4	Lyc. O-360-A1D 180 hp/CS	52	2575/1525	143/133	654 726	1395/1550	800	16,500	49	23' 2" / 8' 4" / 35'	167	\$30,200
Executive M20F	4	Lyc. 10-360-A1A 200 hp/CS	64	2740/1640	150/140	746 803	1637/1786	1005	16,000	54	24' / 8' 4" / 35'	167	\$34,850
201 M20J	4	Lyc. 10-360-A1B6D 200 hp/CS	64	2740/1640	169/157	847 945	1559/1990	1030	18,800	53	24' 8" / 8' 4" / 35'	167	\$41,200
PIPER AIRCRAFT CORP.													
Arrow III	4	Lyc. 10-360-C1C 200 hp/CS	77	2750/1585	143/136	910 950	1600/1525	831	16,200	55	25' / 8' / 35'	170	\$37,850
Turbo Arrow III	4	Cont. TS10-360-F 200 hp/CS	77	2900/1633	154/147	760 830	1620/1555	940	20,000	58	25' / 8' / 35'	170	\$41,800

* Fixed Pitch or Constant Speed

**Gross Weight, Sea Level

NA Not available

Model	Seats	Powerplant HP/Propeller (FP or CS)*	Fuel Capacity (gal.) (Std./Opt.)	Weights Gross/Empty (lbs)	Cruise Speed		Optimum Range (nm) (With 45 min. reserve)		Takeoff/Landing Distance (ft) (Over 50' Obstacle)	Rate of Climb** (fpm)	Service Ceiling (ft)	Stall Speed gear/flaps down (knots)	Length/ Height/Span	Wing Area (sq. ft)	Price (Basic)
					75% (knots)	65% (knots)	75% (Std./Opt.)	65% (Std./Opt.)							
Lance	6-7	Lyc. 10-540-K1A5 300 hp/CS	98	3600/1980	158/150	874	827	1690/1710	1000	14,600	61	27' 10"/ 9' 32' 10"	175	\$54,640	
ROCKWELL INTERNATIONAL															
Rockwell Commander 112B	4	Lyc. 10-360-C106 200 hp/CS	50/70	2800/1773	142/135	530/791	558/840	1829/1039	950	15,050	51	25' 1"/ 8' 5"/35' 7"	164	\$44,900	
Rockwell Commander 112TC-A	4	Lyc. T0-360-C1A6D 210 hp/CS	50/70	2950/1834	163/155	460/715	528/821	2100/1335	938	20,000	52	25' 1"/ 8' 5"/35' 7"	164	\$50,900	
Rockwell Commander 114	4	Lyc. 10-540-T4A50 260 hp/CS	70	3140/1858	161/153	643	687	1805/1318	1160	17,400	55	25' 1"/ 8' 5"/32' 9"	152	\$55,900	
SAI MARCHETTI, SpA															
SF-260C	4	Lyc. O-540-E4A5 260 hp/CS	61	2430/1478	191/184	818	940	1400/1667	1880	15,300	68	23' 4"/ 7' 11"/27' 5"	109	\$110,000	
TEAL AIRCRAFT CORP.															
TSC-1A3 Marlin (Amphibian)	2-4	Lyc. O-360-A1F6D 180 hp/CS	46/72	2300/1435	104/100	320/505	365/575	1300/850 (Water) 1000/950 (Land)	700	14,000	45	23' 7"/ 9' 5"/31' 11"	157	On request	
TRIDENT AIRCRAFT LTD.															
TR-1 (Amphibian)	4-6	Tiara 6-285 285 hp/CS	100	3800/2400	133/128	730	790	2500/1400 (Water) 1700/1500 (Land)	1000	16,000	50	28' 5"/ 12' 6"/ 41' 11" (Floats up) 36' 8" (Floats down)	246	\$85,000	



Piston Multi-Engine

Model	Seats	Powerplants HP	Fuel Capacity (gal.) (Std./Opt.)	Weights Gross/Empty (lbs)	Cruise Speed		Optimum Range (nm) (With 45 min. reserve)		Takeoff/Landing Distance (ft) (Over 50' Obstacle)	Rate of Climb** (fpm)	Service Ceiling (ft)	Stall Speed gear/flaps down (knots)	Length/ Height/Span	Wing Area (sq. ft)	Price (Basic)
					75% (knots)	65% (knots)	75% (Std./Opt.)	65% (Std./Opt.)							
BEECH AIRCRAFT CORP.															
Baron B55	4-6	2 Cont. 10-470-L 260 hp ea.	100/136	5100/3226	188/184	NA/798	NA/907	2154/2148	1693	19,300	73	28'/ 9' 7"/37' 10"	199	\$104,850	
Baron E55	4-6	2 Cont. 10-520-C 285 hp ea.	100/136/ 166	5300/3241	200/195	NA/933	NA/1032	2050/2202	1682	19,100	73	29'/ 9' 2"/37' 10"	199	\$128,350	
Baron 58	4-6	2 Cont. 10-520-C 285 hp ea.	136/166/ 194	5400/3356	200/195	NA/1108	NA/1224	2101/2498	1660	18,600	74	29' 10"/ 9' 6"/37' 10"	199	\$149,750	
Baron 58TC	4-6	2 Cont. TS10-520- L 301 hp ea.	166/190	6100/3780	223/210	NA/1032	NA/1131	2495/2498	1461	25,000+	79	29' 10"/ 9' 6"/37' 10"	188	\$170,750	
Baron 58P	4-6	2 Cont. TS10-520- L 310 hp ea.	166/190	6100/3985	231/218	NA/1086	NA/1170	2376/2498	1529	25,000+	73	29' 10"/ 9' 6"/37' 10"	188	\$200,750	
Duke B60	4-6	2 Lyc. T10-541- E1C4 380 hp ea.	142/202/ 232	6775/4380	233/225	NA/1072	NA/1112	2626/3065	1601	30,000	72	33' 10"/ 12' 4"/39' 3"	213	\$251,250	
Queen Air B80	7-11	2 Lyc. IGSO-540- A1D 380 hp ea.	200/254	8800/5312	196/192	713/958	795/1077	2556/2572	1275	26,800	70	35' 6"/ 14' 8"/50' 3"	294	\$274,750	
BRITTEN-NORMAN, LTD.															
Islander BN 2A-8 (fg)	10	2 Lyc. O-540- E4C5 260 hp ea.	135	6200/3212	140/138	700	750	1160/960	950	13,000	40	35' 7"/ 13' 9"/49'	325	\$197,490	
Islander BN 2A-9 (fg)	10	2 Lyc. O-540- E4C5 260 hp ea.	196	6300/3312	140/138	800	850	1160/960	950	13,000	40	35' 7"/ 13' 9"/53'	337	\$206,940	
Islander BN 2A-20 (fg)	10	2 Lyc. 10-540- K1B5 300 hp ea.	135	6560/3722	148/145	600	660	1100/960	1130	18,000	40	35' 7"/ 13' 9"/49'	325	\$216,245	

* Fixed Pitch or Constant Speed

**Gross Weight, Sea Level

NA Not available

(fg) Fixed Gear

Model	Seats	Powerplants HP	Fuel Capacity (gal.) (Std./Opt.)	Weights Gross/Empty (lbs)	Cruise Speed		Optimum Range (nm) (With 45 min. reserve)		Takeoff/Landing Distance (ft) (Over 50' Obstacle)	Rate of Climb* (fpm)	Service Ceiling (ft)	Stall Speed gear/flaps down (knts)	Length/ Height/Span	Wing Area (sq. ft)	Price (Basic)
					75% (knts)	65% (knts)	75% (Std./Opt.)	65% (Std./Opt.)							
Islander BN 2A-21 (fg)	10	2 Lyc. 10-540- K1B5 300 hp ea.	196	6600/3762	148/145	800	880	1100/960	1130	18,000	40	35' 7"/ 13' 9"/53'	337	\$225,695	
Trislander BN 2A-Mark III (fg)	18	3 Lyc. 0-540- E4C5 260 hp ea.	196	10,000/NA	154/150	820	870	1919/1430	1000	12,400	50	48' 2"/ 14' 2"/53'	337	\$383,625	

CESSNA AIRCRAFT CO.

337 Skymaster	6	2 Cont. 10-360-G 210 hp ea.	91/151	4630/2790	169/155	544/987	580/1053	1675/1650	1100	18,000	61	29' 10"/ 9' 2"/38' 2"	203	\$79,950
310	4-6	2 Cont. 10-520-M 285 hp ea.	102/207	5500/3347	195/182	495/1140	530/1230	1700/1790	1662	19,750	78	31' 11"/ 10' 8"/36' 11"	179	\$114,550
P337 Skymaster	5	2 Cont. TS10-360- C 225 hp ea.	151	4700/3061	205/192	985	1047	1500/1675	1250	20,000	62	29' 10"/ 9' 2"/38' 2"	203	\$121,950
T-310	4-6	2 Cont. TS10-520- B 285 hp ea.	102/207	5500/3463	223/209	530/1240	545/1295	1662/1790	1700	27,400	78	31' 11"/ 10' 8"/36' 11"	179	\$132,990
402 Businessliner	6-8	2 Cont. TS10-520- E 300 hp ea.	100/203	6300/3873	210/195	455/1070	480/1135	2220/1765	1610	26,180	73	36' 1"/ 11' 8"/39' 11"	196	\$171,650
402 Utiliner	10	2 Cont. TS10-520- E 300 hp ea.	100/203	6300/3904	210/195	455/1070	480/1135	2220/1765	1610	26,180	73	36' 1"/ 11' 8"/39' 11"	196	\$171,650
340A	6	2 Cont. TS10-520- N 310 hp ea.	102/207	5990/3878	227/212	485/1165	520/1240	2175/1850	1650	29,800	71	34' 4"/ 12' 7"/38' 1"	184	\$183,350
414	7	2 Cont. TS10-520- N 310 hp ea.	100/203	6350/4133	222/207	480/1140	510/1220	2350/1865	1580	30,100	74	33' 9"/ 11' 8"/39' 11"	196	\$217,190
404 Titan Ambassador	6-11	2 Cont. GTS10- 520-M 375 hp ea.	348	8400/4804	214/200	1495	1580	2367/2130	1575	26,000	70	39' 6"/ 13' 3"/46' 4"	242	\$263,950
404 Titan Courier	6-11	2 Cont. GTS10- 520-M 375 hp ea.	348	8400/4823	214/200	1495	1580	2367/2130	1575	26,000	70	39' 6"/ 13' 3"/46' 4"	242	\$263,950
421C Golden Eagle	8	2 Cont. GTS10- 520-L 375 hp ea.	206/262	7450/4572	243/227	945/1240	1005/1325	2323/2293	1940	30,200	77	36' 5"/ 11' 5"/41' 2"	215	\$291,750
421C Executive Commuter	10	2 Cont. GTS10- 520-L 375 hp ea.	206/262	7450/4572	243/227	945/1240	1005/1325	2323/2293	1940	30,200	77	36' 5"/ 11' 5"/41' 2"	215	\$291,750

DOMINION AIRCRAFT CORP., LTD.

Skytrader 800 (fg)	9	2 Lyc. T1G0-541- E1A 450 hp ea.	80/160	9000/5450	148/139	757	957	900/800	1600	17,500	48	42'/ 18' 11"/55'	385	\$237,000
--------------------	---	------------------------------------	--------	-----------	---------	-----	-----	---------	------	--------	----	---------------------	-----	-----------

PIPER AIRCRAFT CORP.

Seneca II	6-7	2 Cont. TS10- 360-E 200 hp ea.	98/128	4570/2823	191/181	546/784	586/844	1240/2090	1340	25,000	61	28' 6"/ 9' 11"/38' 11"	209	\$84,730
Aztec F	6	2 Lyc. 10-540- C4B5 250 hp ea.	144/184	5200/3180	179/171	792/1061	831/1112	1695/1310	1400	17,600	60	31' 2"/ 10/37' 4"	207	\$110,100
Turbo Aztec F	6	2 Lyc. T10-540- C1A 250 hp ea.	144/184	5200/3317	216/193	741/1022	781/1077	1695/1310	1470	24,000+	60	31' 2"/ 10/37' 4"	207	\$123,485
Navajo C	6-8	2 Lyc. T10-540- A2C 310 hp ea.	192	6500/3991	216/204	1007	1057	1700/1810	1445	26,300	70	32' 8"/ 13/40' 8"	229	\$179,790
Navajo C/R	6-8	2 Lyc. T10-540- F2BD 325 hp ea.	192	6500/4097	220/209	941	1002	1630/1810	1500	26,400	70	32' 8"/ 13/40' 8"	229	\$191,440
Chieftain	6-10	2 Lyc. T10-540- J2BD 350 hp ea.	192	7000/4219	221/211	877	927	1780/1610	1390	27,200	74	34' 8"/ 13/40' 8"	229	\$204,430
Navajo (Pressurized)	6-8	2 Lyc. T1G0-541- E1A 425 hp ea.	192/242	7800/5004	236/217	792/NA	901/NA	2200/2700	1740	29,000+	73	34' 6"/ 13' 3"/40' 8"	229	\$272,450

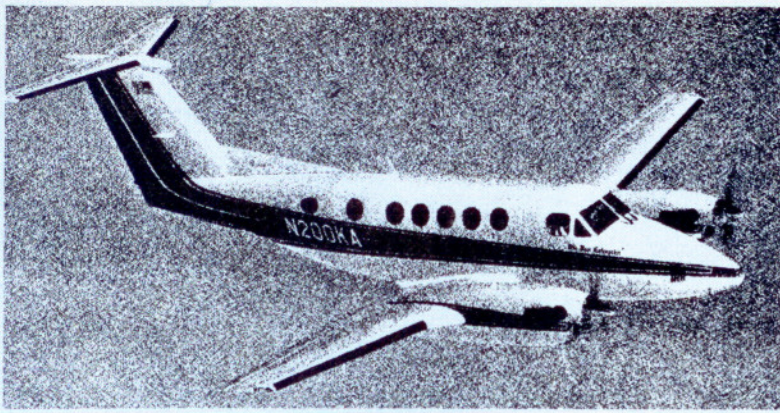
ROCKWELL INTERNATIONAL

Rockwell Shrike Commander 500S	4-7	2 Lyc. 10-540- E1B5 290 hp ea.	156	6750/4635	176/173	693	790	1915/2235	1340	19,400	59	36' 9"/ 14' 6"/49' 1"	255	\$187,700
-----------------------------------	-----	-----------------------------------	-----	-----------	---------	-----	-----	-----------	------	--------	----	--------------------------	-----	-----------

TED SMITH AEROSTAR CORP.

600A	6	2 Lyc. 10-540- K1F5 290 hp ea.	175	5500/3700	218/209	1270	1408	1400/1950	1800	21,200	67	34' 10"/ 12' 1"/34' 2"	170	\$156,900
601B	6	2 Lyc. 10-540- S1A5 290 hp ea.	175	6000/3875	254/234	1360	1435	2310/2180	1530	30,000	71	34' 10"/ 12' 1"/36' 8"	178	\$174,900
601P	6	2 Lyc. 10-540- S1A5 290 hp ea.	175	6000/4000	248/234	1360	1435	2310/2180	1530	26,350	71	34' 10"/ 12' 1"/36' 8"	178	\$220,900

* Gross Weight, Sea Level (fg) Fixed Gear NA Not available



Turboprops

Model	Seats	Powerplant(s) HP	Fuel Capacity (gal.)	Weights Gross/Empty (lbs.)	Cruise Speed Maximum/ Economy (knots)	Optimum Range (nm) (With 45 min. reserve)	Takeoff/Landing Distance (ft) (Over 50' Obstacle)	Rate of Climb* (fpm)	Service Ceiling (ft)	Stall Speed gear/flaps down (knots)	Length/ Height/Span	Wing Area (sq. ft)	Price (Basic)
AEROCOM, INC.													
Standard Skyliner	21	2 P & W PT6A-34 flat rated 750 hp ea.	695	12,500/6200	225/190	2000	1480/1520	2080	27,500	65	54' 4" / 16' 6" / 54'	388	\$685,000
AMERICAN JET INDUSTRIES													
Hustler 400**	7	P & W PT-6A-41 850 eshp. Teledyne CAE CAJ- 372 640 lbs. thrust	300	6500/3800	330/287	2580	1270/1000	3000	36,200	59	38' / 10' 10" / 32' 8"	181	\$395,000
BEECH AIRCRAFT CORP.													
King Air C90	6-10	2 P & W PT-6A-21 550 shp ea.	384	9650/5717	222	1281	2261/2010	1955	28,100	76	35' 6" / 14' 3" / 50' 3"	294	\$504,500
King Air E90	6-10	2 P & W PT6A-28 550 shp ea.	474	10,100/5974	249	1625	2024/2110	1870	27,620	77	35' 6" / 14' 3" / 50' 3"	294	\$684,500
B99 Airliner	17	2 P & W PT6A-28 680 shp ea.	368	10,900/5777	247	1019	2480/2793	2090	26,313	75	44' 7" / 14' 4" / 45' 11"	280	\$725,000
King Air A100	8-15	2 P & W PT6A-28 680 shp ea.	470	11,500/6767	248	1340	2681/2944	1963	24,850	75	39' 11" / 15' 4" / 45' 11"	280	\$784,500
King Air B100	8-15	2 Garrett TPE 331-6-252B 715 shp ea.	470	11,800/7073	265	1325	2694/3413	2139	29,100	83	39' 11" / 15' 4" / 45' 11"	280	\$809,500
Super King Air	8-15	2 P & W PT5A-41 850 shp ea.	544	12,500/7334	285/280	1887	2579/2845	2450	31,000+	75	43' 9" / 15' 5" / 45' 6"	303	\$961,500
CESSNA AIRCRAFT CO.													
441 Conquest Propjet	8-11	2 Garrett TPE 331- 8-4015 625 shp ea.	468	9850/5487	287/285	1832	2475/2410	2350	37,000	74	39' / 13' 1" / 49' 4"	253	\$850,000
INTERCEPTOR CO.													
Interceptor 400	4	Garrett TPE 331 400 shp	145	4030/2400	261/244	1000	1410/1200	1500	24,000	59	27' 4" / 10' 6" / 30' 6"	160	\$210,000
MITSUBISHI AIRCRAFT INTERNATIONAL, INC.													
MU-2P	7-9	2 TPE 331-5-252M 724 eshp ea.	364	10,470/6892	317/304	1391	1800/1600	2350	32,200	73	33' 3" / 12' 11" / 39' 2"	178	\$755,000
MU-2N	8-11	2 TPE 331-5-252M 776 eshp ea.	364	11,575/7698	296/283	1200	2170/1880	2250	29,600	76	39' 5" / 13' 8" / 39' 2"	178	\$845,000
PIPER AIRCRAFT CORP.													
Cheyenne	6-8	2 P & W PT68-28 620 shp ea.	390	9050/4976	284/NA	1513	1980/1860	2800	29,000+	77	34' 8" / 12' 9" / 42' 8"	229	\$532,300
ROCKWELL INTERNATIONAL													
Rockwell Turbo Commander 690B	7-10	2 TPE 331-5-251K 717.5 shp ea.	389	10,375/6195	287/250	1470	1680/1613	2821	32,800	77	44' 4" / 14' 11" / 46' 8"	266	\$599,500
SCOTTISH AVIATION, LTD.													
Jetstream Series 200	16	2 Turbomeca XVI 996 eshp ea.	461	12,500/8741	291/238	1201	2500/2310	2500	26,000	84	47' 2" / 17' 6" / 52'	270	On request
SHORT BROTHERS & HARLAND													
Skyvan III (fg)	18	2 Garrett TPE 331-2 715 shp ea.	348/468	12,500/7947	175/170	600/861	1600/1440	1625	22,500	60	40' 1" / 15' 6" / 41' 11"	378	On request

* Gross Weight, Sea Level

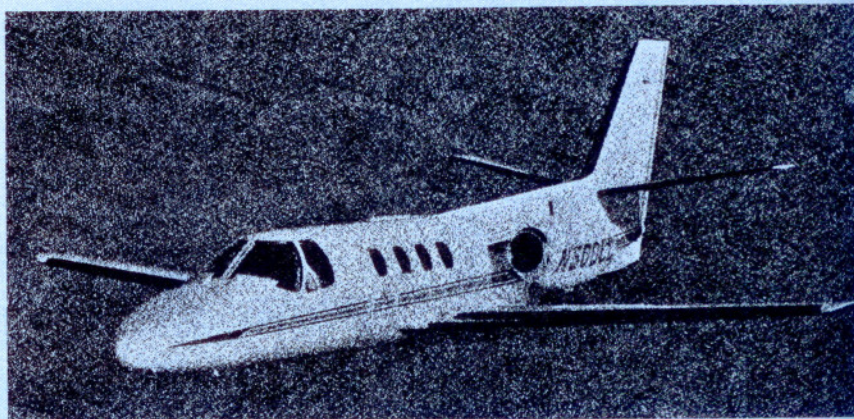
** All performance figures based on turboprop engine operation only

(fg) Fixed Gear

NA Not available

Model	Seats	Powerplant(s)	Fuel Capacity (gal.)	Weights Gross/Empty (lbs.)	Optimum Speed (knots)	Optimum Range (nm) (With 45 min. reserve)	Takeoff/Landing Distance (ft) (Over 50' Obstacle)	Rate of Climb* (fpm)	Service Ceiling (ft)	Stall Speed gear/flaps down (knots)	Length/Height/Span	Wing Area (sq. ft)	Price (Basic)
Skyliner (fg)	19	2 Garrett TPE 331-2 715 shp ea.	348/468	13,700/8670	175/170	592/853	3200/3300	1400	20,000	62	40' 1" / 15' 6" / 11"	378	On request
SD3-30	30	2 P&W PT6A-45 1120 shp ea.	576	22,000/14,200	196/165	853	3850/3400	1210	20,000	74	58' / 16' 3" / 74'	453	On request
SWEARINGEN AVIATION CORP.													
Merlin IIIA	8-11	2 Garrett TPE 331-3U-303G 904 eshp ea.	648	12,500/7600	283	2488	2150/1570	2530	28,900	84	42' 2" / 16' 10" / 46' 3"	277	\$895,000
Merlin IVA	12-16	2 Garrett TPE 331-3U-303G 904 eshp ea.	554	12,500/8200	270	1823	2050/1970	2400	27,000	86	59' 4" / 16' 8" / 46' 3"	277	\$995,000
Metro II	21-22	2 Garrett TPE 331-3UW-303G 1010 eshp ea.	648	12,500/7660	256	2137	2050/1970	2400	27,000	86	59' 4" / 16' 8" / 46' 3"	277	\$995,000

Turbojets



Model	Seats	Powerplant(s)	Fuel Capacity (gal.)	Weights Gross/Empty (lbs.)	Optimum Speed (knots)	Optimum Range (nm) (With 45 min. reserve)	Takeoff/Landing Distance (ft) (Over 50' Obstacle)	Rate of Climb* (fpm)	Service Ceiling (ft)	Stall Speed gear/flaps down (knots)	Length/Height/Span	Wing Area (sq. ft)	Price (Basic)
AVIONS MARCEL DASSAULT													
Falcon 10	8	2 Garrett TFE-731-2 Turbofans, 3230 lbs. static thrust ea.	822	18,740/10,000	490	2000	4200/2200	4500	45,000	81	45' 4" / 14' 6" / 42' 11"	259	\$1,890,000
Falcon 20F	11	2 GE CF700-2D-2 Turbofans, 4500 lbs. static thrust ea.	1380	28,660/16,900	455	1770	4800/2000	4400	42,000	80	56' 3" / 17' 8" / 53' 6"	441	\$2,990,000
Falcon 50	12	3 Garrett TFE-731-3 Turbofans, 3700 lbs. static thrust ea.	2290	37,480/19,840	470	3150	4800/2100	4000	45,000	78	60' 5" / 22' 11" / 61' 11"	495	\$4,850,000
BEDE GENERAL CORP.													
BD-5J	1	Turbojet TRS-18 200 lbs. thrust	55	960/450	240	509 (20 min. res.)	1800/1000	1180	15,000	60	12' 5" / 6' / 17'	38	\$48,000
CESSNA AIRCRAFT CO.													
Citation I	7-9	2 P & W JT15D-1A 2200 lbs. thrust ea.	564	12,000/6462	351	1327	2930/2270	2680	41,000	83	43' 6" / 14' 4" / 47' 1"	279	\$946,000
GATES LEARJET CORP.													
24E	8	2 GE CJ610-6 2950 lbs. thrust ea.	715	12,900/7025	465	1265	3000/2789	7220	45,000	87	43' 3" / 12' 3" / 35' 7"	232	\$988,500
24F	8	2 GE CJ610-6 2950 lbs. thrust ea.	840	13,500/7130	465	1474	3297/2789	7100	45,000	87	43' 3" / 12' 3" / 35' 7"	232	\$1,188,000
25D	10	2 GE CJ610-6 2950 lbs. thrust ea.	910	15,000/7640	465	1535	3937/2744	6300	45,000	91	47' 7" / 12' 3" / 35' 7"	232	\$1,297,500
25F	8	2 GE CJ610-6 2950 lbs. thrust ea.	1103	15,000/7575	465	1661	3937/2744	6300	45,000	91	47' 7" / 12' 3" / 35' 7"	232	\$1,348,500
35A	10	2 Garrett TFE-731-2 3500 lbs. thrust ea.	931	17,000/9110	465	2421	4224/2884	4900	45,000	96	48' 8" / 12' 3" / 39' 6"	253	\$1,738,500

* Gross Weight, Sea Level (fg) Fixed Gear

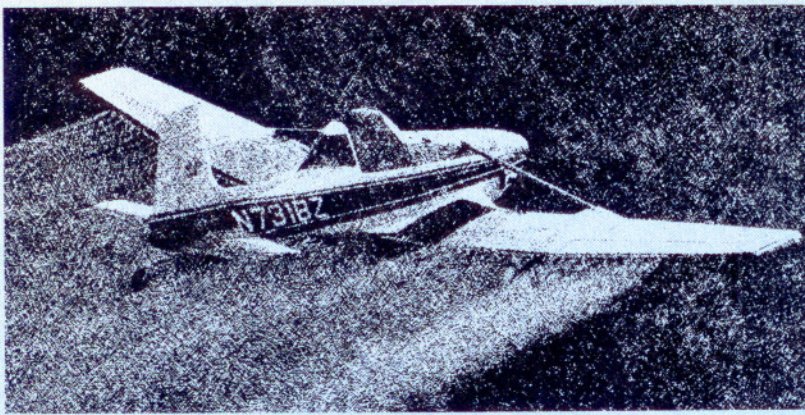
Model	Seats	Powerplant(s)	Fuel Capacity (gal.)	Weights Gross/Empty (lbs.)	Optimum Speed (knots)	Optimum Range (nm) (With 45 min. reserve)	Takeoff/Landing Distance (ft) (Over 50' Obstacle)	Rate of Climb* (fpm)	Service Ceiling (ft)	Stall Speed gear/flaps down (knots)	Length/Height/Span	Wing Area (sq. ft)	Price (Basic)
36A	8	2 Garrett TFE-731-2 3500 lbs. thrust ea.	1110	18,000/9154	465	2856	4784/2884	4525	45,000	96	48' 8" / 12' 3" / 39' 6"	253	\$1,769,000
GRUMMAN AMERICAN AVIATION CORP.													
Gulfstream II	19	2 R.R. Spey MK511-8 11,400 lbs. thrust ea.	4000 (tip tanks)	66,000/36,900	505	3712 (30 min. res.)	5700/3190	4350	43,000	120	79' 11" / 24' 6" / 71' 10"	810	On request
HAWKER SIDDELEY AVIATION, INC.													
HS 125 Series 700	8-14	2 Garrett TFE-731-3-1H 3700 lbs. thrust ea.	1418	24,500/13,000	440	2300	6200/2710	NA	41,000	81	50' 9" / 17' 7" / 47'	353	\$2,650,000
ISRAEL AIRCRAFT INDUSTRIES, LTD.													
1124 Westwind	7	2 Garrett 731-3 3700 lbs. thrust ea.	1300	23,000/12,700	470	2436	4840/2400	4000	45,000	85	52' 3" / 15' 10" / 44' 10"	308	\$1,970,000
LOCKHEED-GEORGIA CO.													
JetStar II	12	4 Garrett TFE-731-3 3700 lbs. thrust ea.	2660	44,000/24,178	438	2770 (30 min. res.)	5000/3890	4200	43,000	108	60' 5" / 20' 5" / 54' 5"	542	\$4,395,000
ROCKWELL INTERNATIONAL													
Sabreliner 60	12	2 P & W JT-12A-8 3300 lbs. thrust ea.	1063	20,172/11,250	489	1715	5050/2365	4700	45,000	86	46' 11" / 16' / 44' 7"	342	On request
Sabreliner 75A	12	2 GE CF700 2D-2 4500 lbs. thrust ea.	1012	23,000/13,200	489	1750	4380/2625	4500	45,000	89	47' 2" / 17' 3" / 44' 7"	342	On request

STOL Aircraft



Model	Seats	Powerplants HP	Fuel Capacity (gal.) (Std./Opt.)	Weights Gross/Empty (lbs)	Cruise Speed 75% 65% (knots)	Optimum Range (nm) (With 45 min. reserve) 75% 65% (Std./Opt.)	Takeoff/Landing Distance (ft) (Over 50' Obstacle)	Rate of Climb* (fpm)	Service Ceiling (ft)	Stall Speed gear/flaps down (knots)	Length/Height/Span	Wing Area (sq. ft)	Price (Basic)	
DE HAVILLAND AIRCRAFT OF CANADA, LTD.														
DHC-6 Series 300 (fg)	22	2 P&W PT6A-27 620 shp ea.	378/472	12,500/7387	162/150	775/985	NA	1200/1050	1600	26,700	58	51' 9" / 19' 6" / 65'	420	\$743,000
Dash 7	53	4 PT6A-50 1120 shp ea.	1480	43,000/26,450	230/215	1340	NA	NA	1310	22,200	66	80' 8" / 26' 2" / 93'	860	On request
FAIRCHILD INDUSTRIES, INC.														
Porter (fg)	8-11	P&W PT6A-27 652 eshp/or Garrett TPE-331 715 shp	170	4850/2806	143/128	538 (P&W 27) 513 (TPE-331)	NA	590/715 (P&W 27) 550/550 (TPE-331)	1560	26,000	42	35' 9" / 10' 6" / 49' 10"	310	On request
HELIO AIRCRAFT, LTD.														
H-295 (fg)	6	Lyc. GO-480-G1A6 295 hp	60/120	3400/2250	145/135	480/1050	495/1070	610/520	1250	20,500	26	31' / 8' 10" / 39'	231	On request
HT-295 (fg)	6	Lyc. GO-480-G1A6 295 hp	60/120	3400/2300	145/135	480/1050	495/1070	610/520	1250	20,500	26	31' / 13' 10" / 39'	231	On request
MAULE AIRCRAFT CORP.														
M-5-210C Lunar Rocket (fg)	4	Cont. IO-360-D 210 hp	40/63	2300/1350	137/130	450/700	490/750	600/600	1250	18,000	39	22' 7" / 6' 2" / 30' 10"	158	\$24,500
M-5-235C Lunar Rocket (fg)	4	Lyc. O-540-J1A50 235 hp	40/63	2300/1400	150/142	405/675	450/720	600/600	1350	20,000	39	22' 11" / 6' 2" / 30' 10"	158	\$25,500

* Gross Weight, Sea Level (fg) Fixed Gear NA Not available



AG Planes

Model	Seats	Powerplant(s) HP/Propeller (FP or CS)*	Hopper Capacity (gal.)	Fuel Capacity (gal.) (Std./Opt.)	Weights Gross/Empty (lbs)	Working Speed (knots)	Takeoff/Landing Distance (ft) (Over 50' Obstacle)	Rate of Climb** (fpm)	Stall Speed gear/flaps down (knots)	Length/ Height/Span	Wing Area (sq. ft)	Price (Basic)
AIR TRACTOR, INC.												
AT-300	1	P&W R-985 450 hp/CS	320	76	6000/3250	109	NA	800	65	21' 6" / 8' /45' 1"	270	\$48,500 (Less engine)
AT-301	1	P&W R-1340 600 hp/CS	320	76	6600/3500	117	NA	1000	67	21' 6" / 8' /45' 1"	270	\$48,500 (Less engine)
CESSNA AIRCRAFT CO.												
A118B Agwagon	1	Cont. IO-520-D 300 hp/CS	200	54	4000/2189	104	1090/1265	940	50	26' 3" / 8' /40' 9"	202	\$40,700
A185F Agcarryall	1-6	Cont. IO-520-D 300 hp/CS	151	61/80	3350/1905	104	1450/1400	845	49	25' 9" / 7' 9" /35' 10"	174	\$45,750
A188B Agtruck	1	Cont. IO-520-D 300 hp/CS	280	54	4200/2220	104	1090/1265	940	50	26' 3" / 8' /41' 8"	205	\$45,950
EMAIR												
MA-1	1	P&W R-1340 600 hp/CS	450	108	7000+/3600	87	NA	750	51	28' 8" / 11' 9" /41' 8"	400	\$58,000
MA-1B	1	Wright R-1820 900 hp/CS	450	108	8000+/4200	100	NA	1700	52	28' 8" / 11' 9" /41' 8"	400	\$67,500
GRUMMAN AMERICAN AVIATION CORP.												
Ag-Cat A	1	P&W R-985 450 hp/CS	300	46/64/80	6075/2745	95	1170/1345	990	58	24' 4" / 10' 10" /35' 11"	328	\$63,435
Ag-Cat B	1	P&W R-985 450 hp/CS	300	46/64/80	6075/2900	95	1090/1150	1060	52	25' 11" / 11' /42' 3"	392	\$67,125
Ag-Cat B	1	Cont. R-975 525 hp/CS	300	46/64/80	6075/2950	95	1000/1150	1350	52	25' 11" / 11' /42' 3"	392	\$69,390
Ag-Cat A	1	P&W R-1340 600 hp/CS	300	46/64/80	6075/3015	100	1090/1360	1600	59	24' 4" / 10' 10" /35' 11"	328	\$71,870
PIPER AIRCRAFT CORP.												
Pawnee D-235	1	Lyc. O-540 235 hp/FP	150	39	2900/1420	NA	1350/NA	630	53	24' 8" / 7' 2" /36' 2"	183	\$35,190
Pawnee D-260	1	Lyc. O-540 260 hp/FP or CS	150	39	2900/1472	NA	1200/NA	705	53	24' 8" / 7' 2" /36' 2"	183	\$36,670
Pawnee Brave-285	1	Cont. 6-285-B2 285 hp/CS	275	89	4400/2243	NA	2250/1470	790	58	27' 4" / 7' 6" /39'	225	\$49,690
Pawnee Brave-300	1	Lyc. IO-540-K1G5 300 hp/CS	275	89	4400/2180	NA	2090/1470	375	54	26' 10" / 7' 6" /38' 10"	225	\$50,990
ROCKWELL INTERNATIONAL												
Rockwell Thrush Commander 600	1	P&W 1340 600 hp/CS	400	100	6900/3700	91-100	775/500	900	48	29' 5" / 9' 2" /44' 4"	327	\$78,500
Rockwell Thrush Commander 800	1	WC R-1300 800 hp/CS	400	100	7800/4100	100-108	900/500	1350	49	29' 2" / 9' 2" /44' 4"	327	\$78,500
WEATHERLY AVIATION CO., INC.												
201C	1	P&W R-985 450 hp/CS	270	65	4800/2550	84-115	NA	980	47	27' 2" / 8' 1" /39'	258	\$37,200 (Less engine & prop)

* Fixed Pitch or Constant Speed Propeller

** Gross Weight, Sea Level

NA Not available